

A microscopic view of plant cells, showing a network of green, polygonal cells with prominent white cell walls. The cells are arranged in a honeycomb-like pattern. The text is centered over this background.

Szedjük szét!
Nézzünk bele!

Az első mikroszkóp

Hans és Zacharias Janssen -16. sz. vége



Amit láttak a lencséken keresztül



hangya



Kakukkfűmag

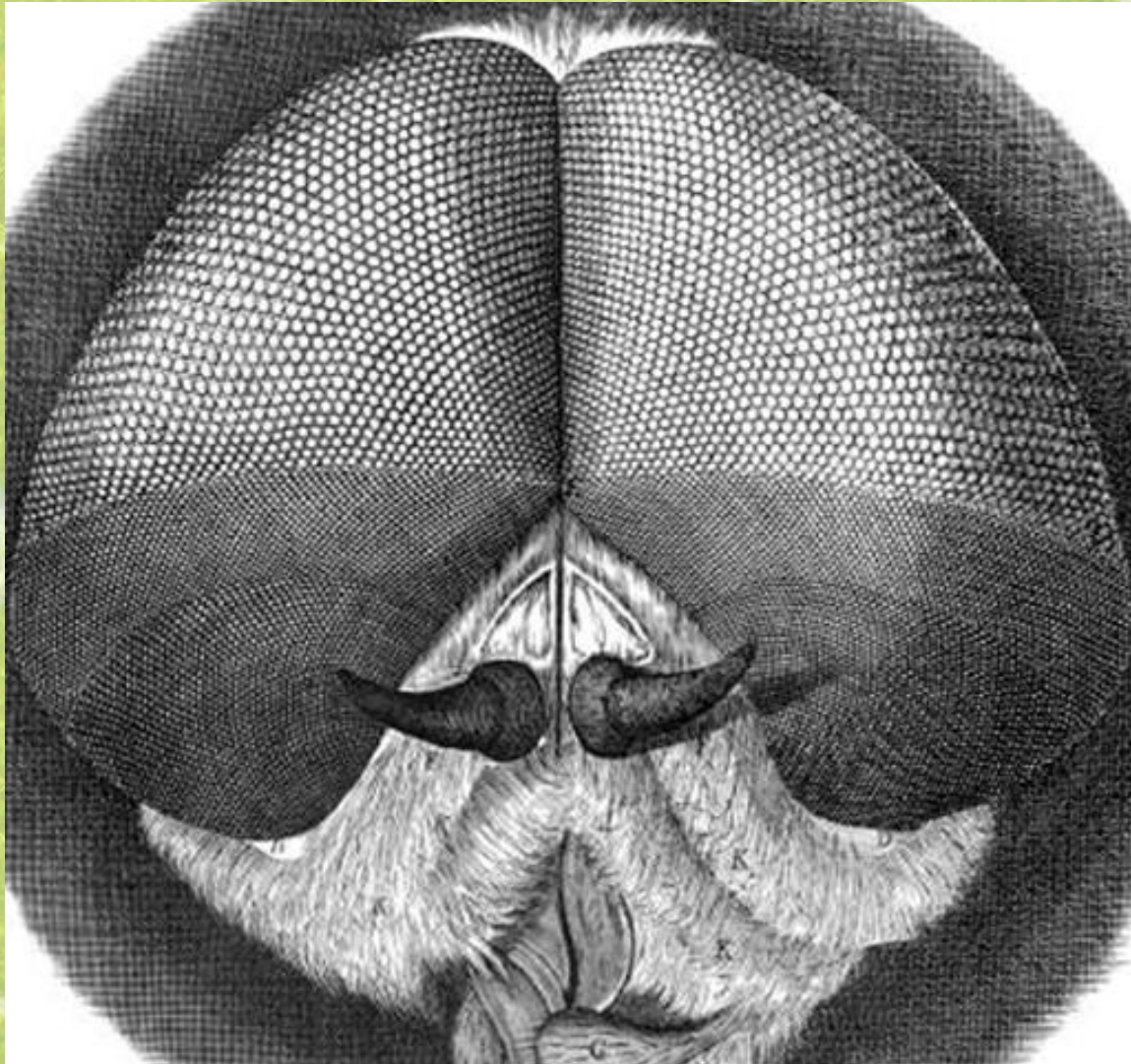
Antony van Leeuwenhoek 1632-1723



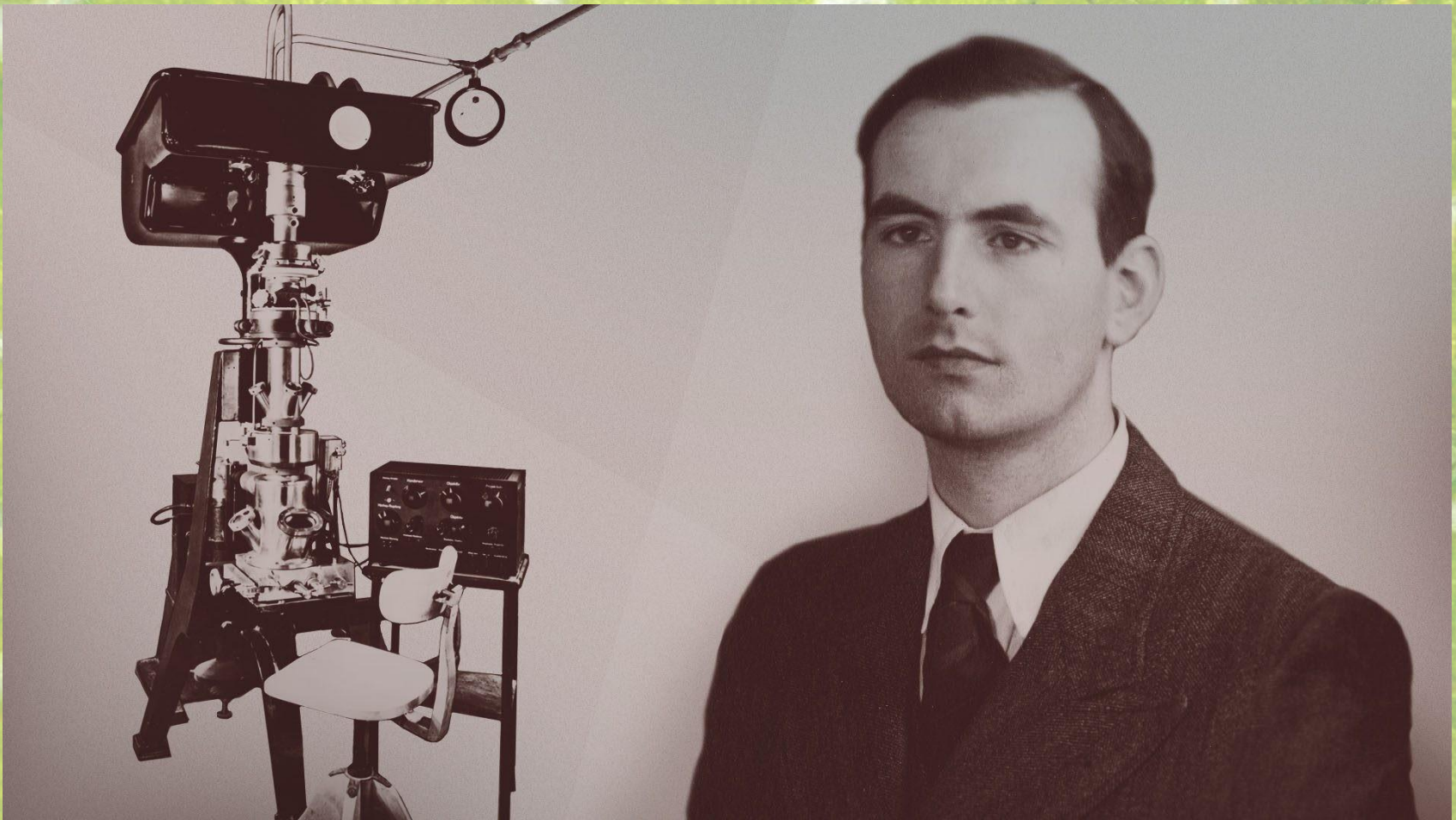
Antony van Leeuwenhoek és mikroszkópja



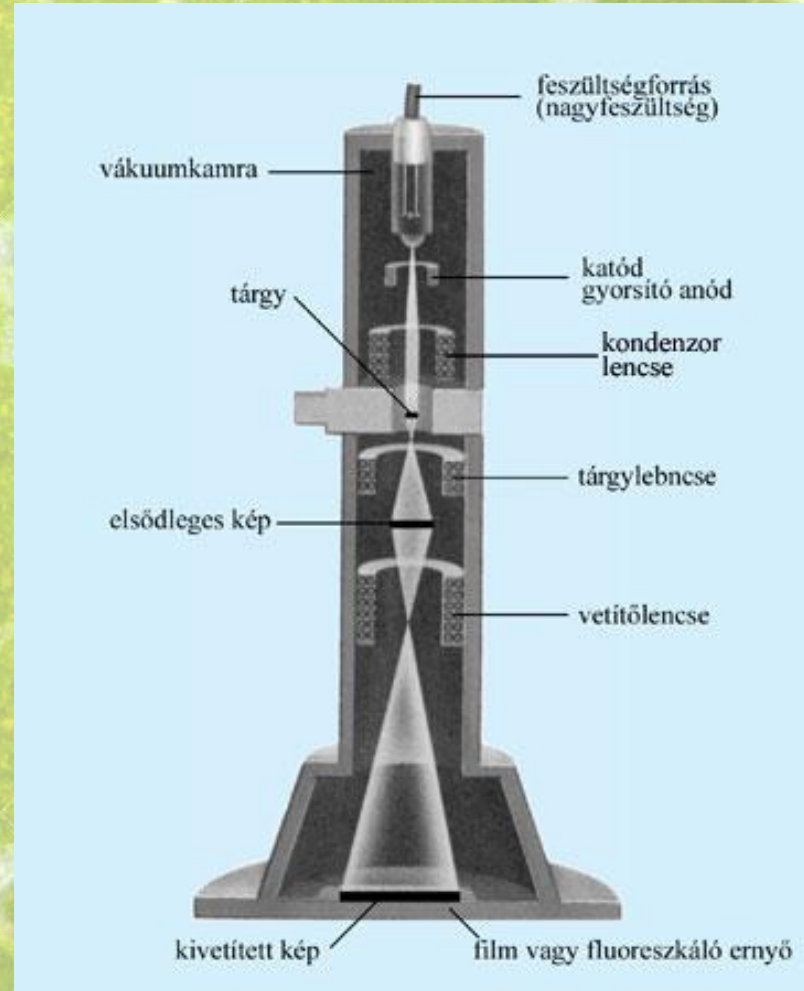
A légy hatszögekből álló szeme



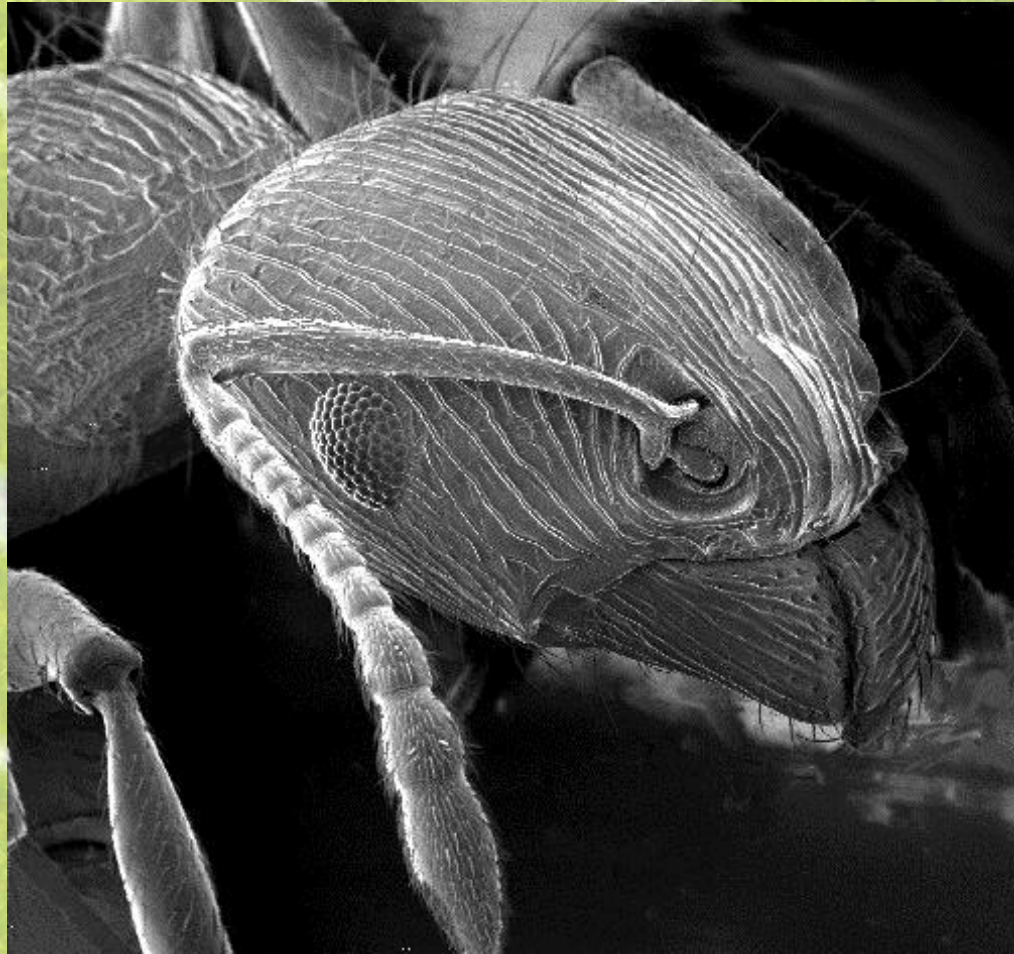
1933- Erns Ruska német fizikus az elektronmikroszkóp felfedezője



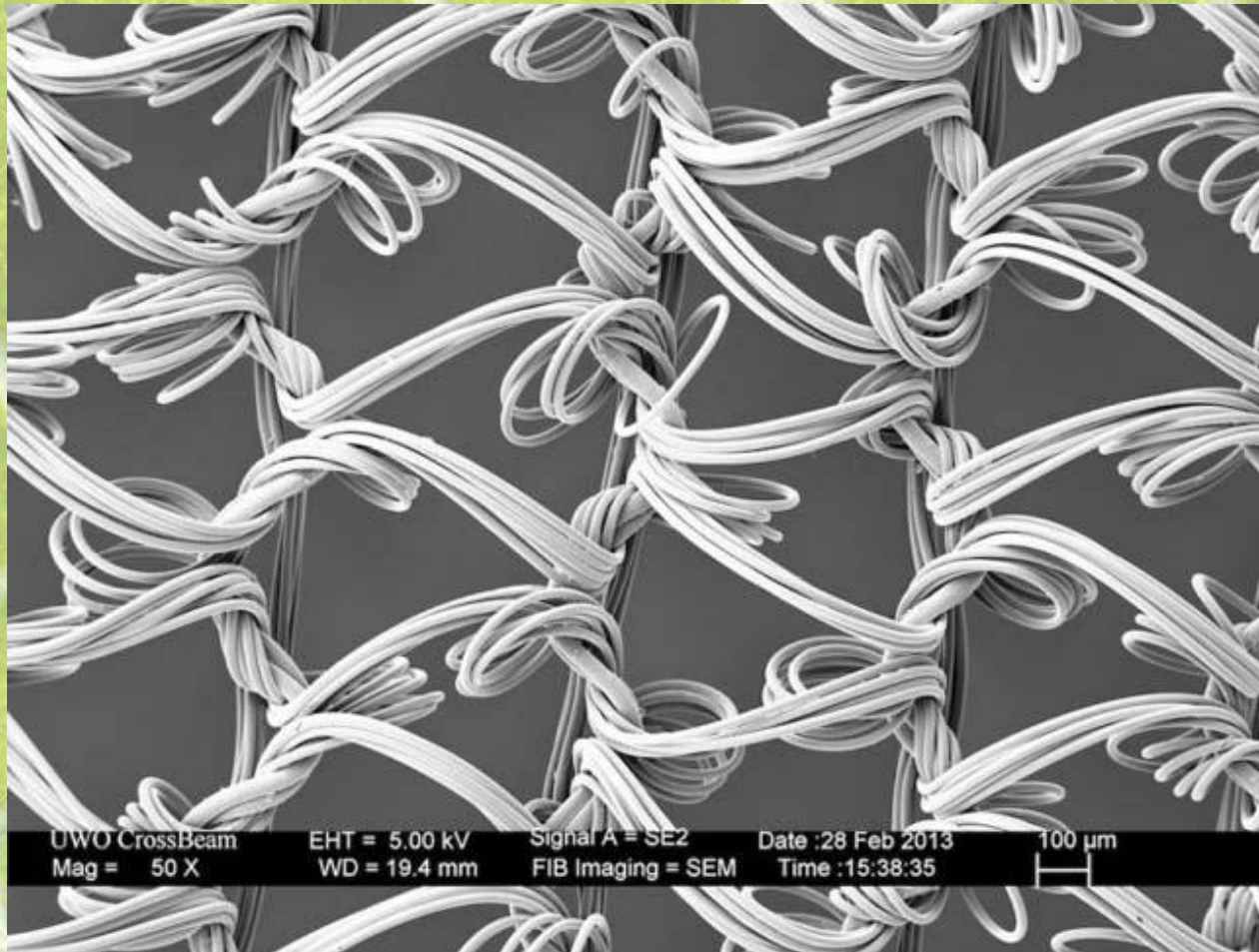
Légüres térben zajlik a vizsgálat



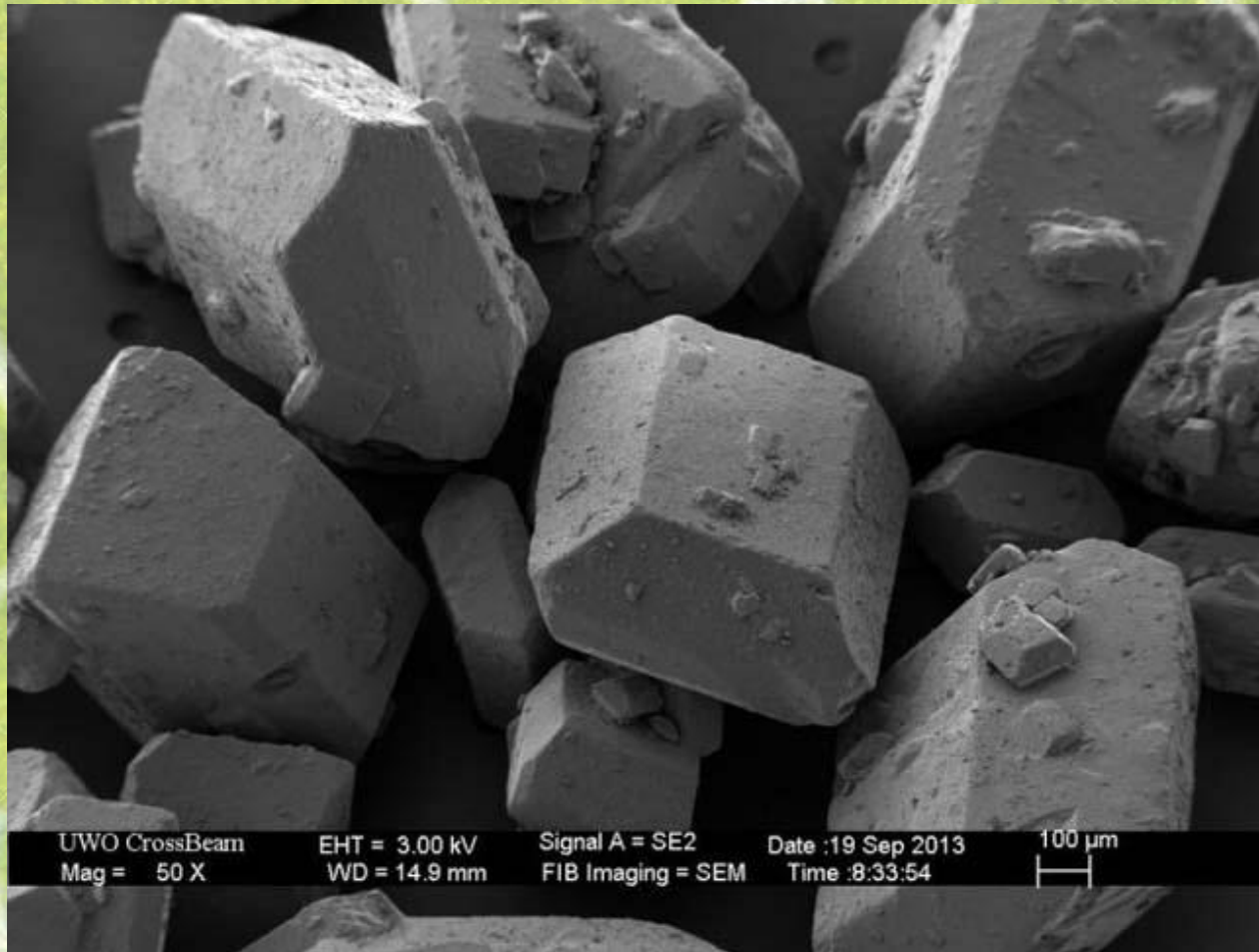
A hangya képe elektronmikroszkóppal



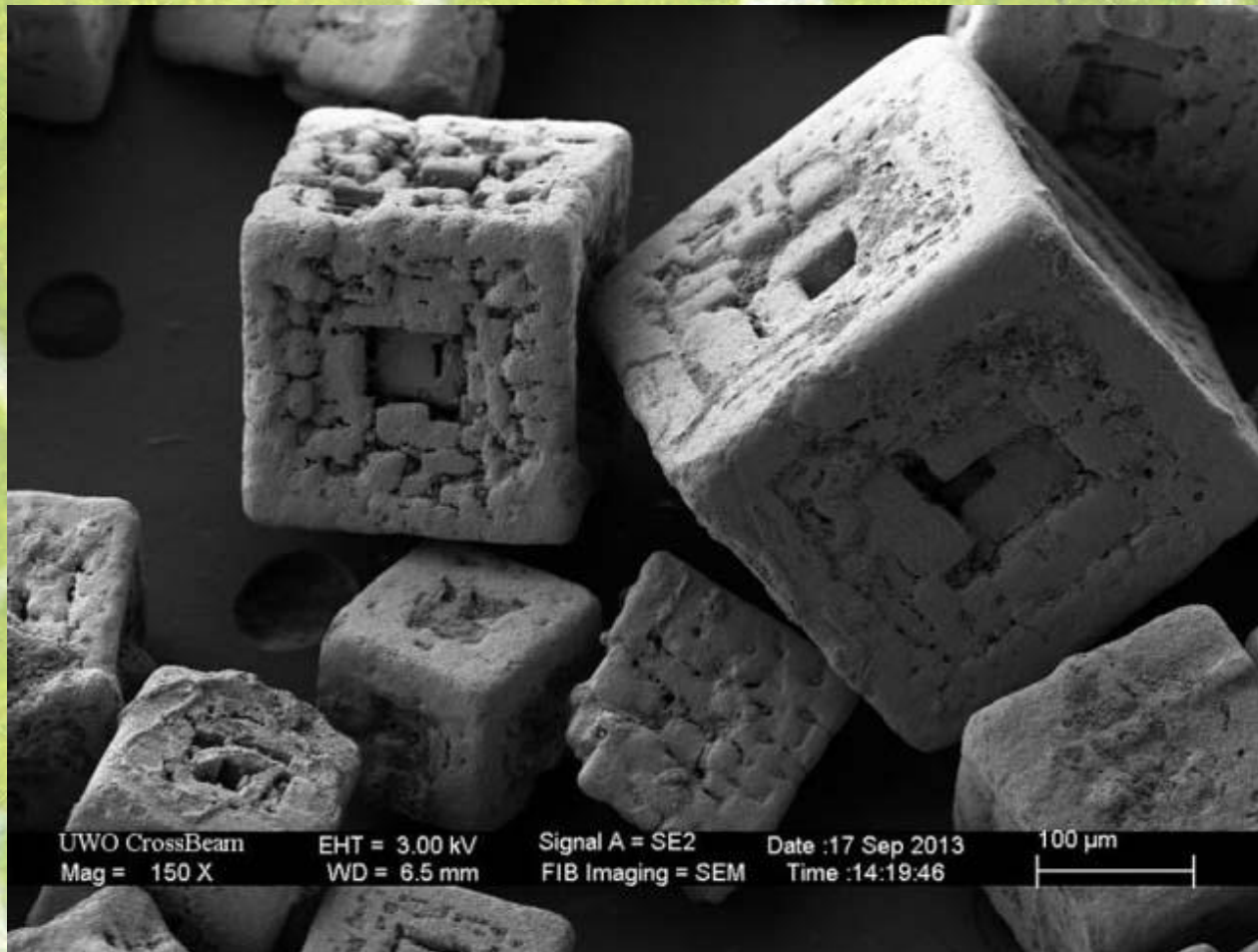
Neylon



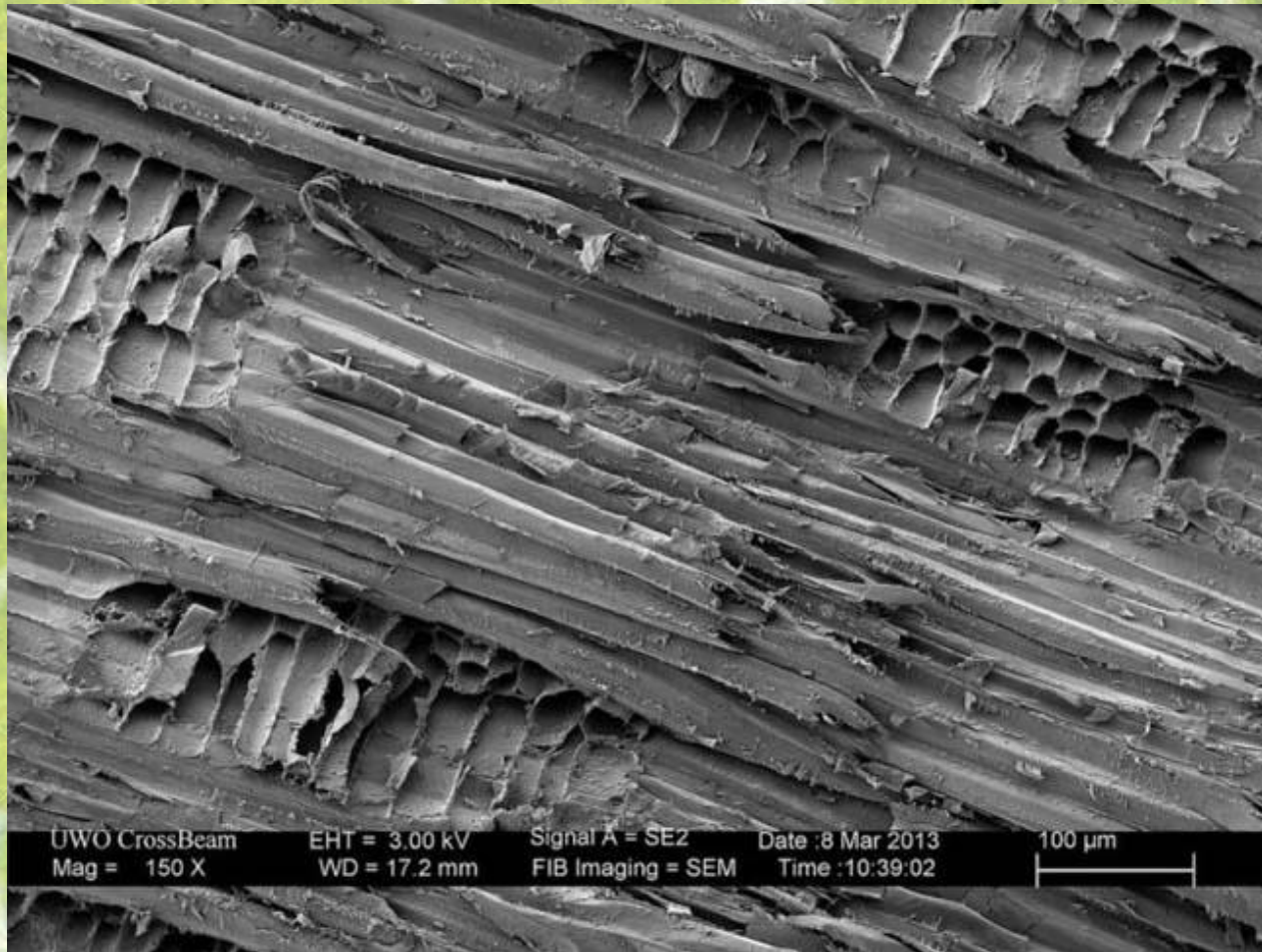
Cukor



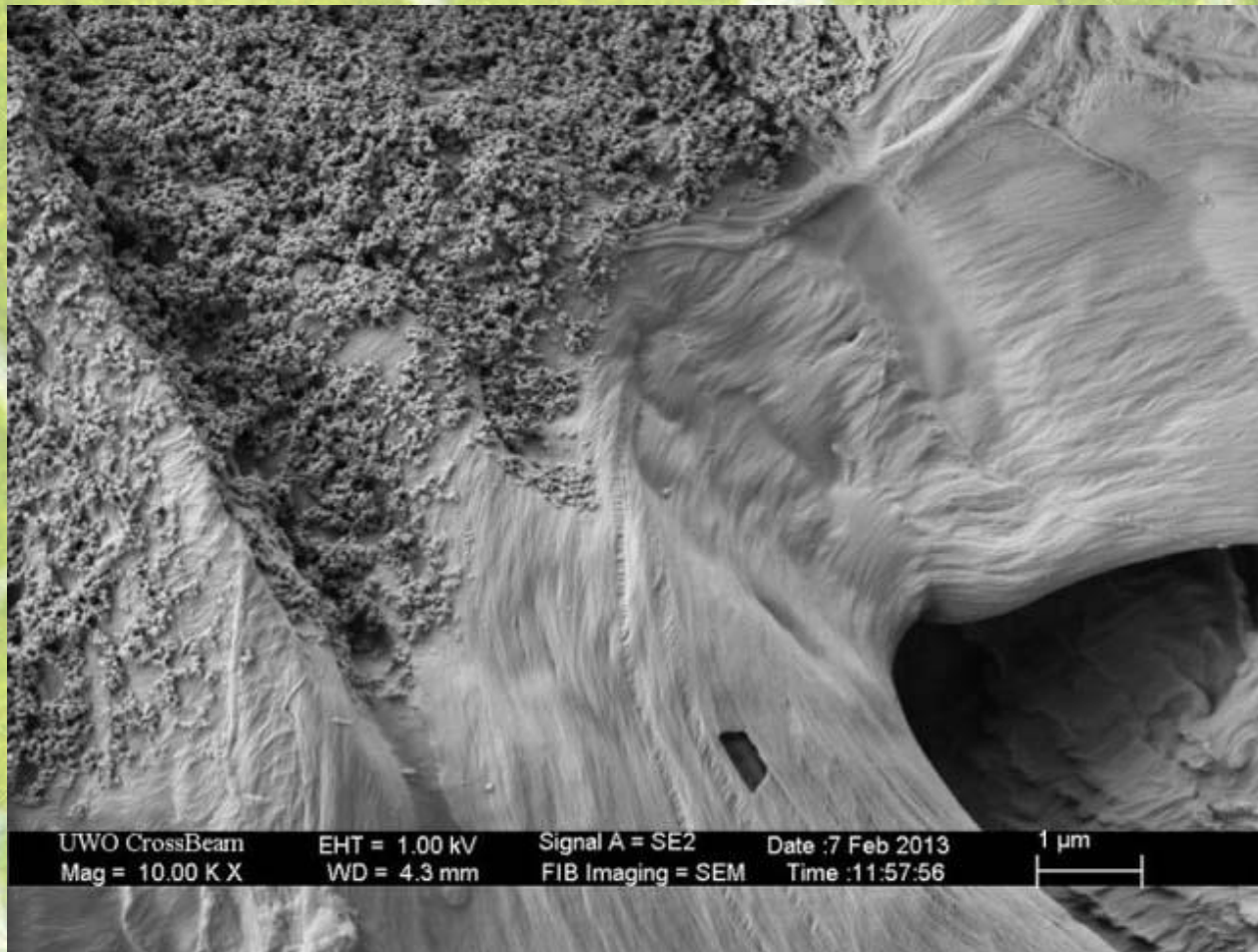
Só



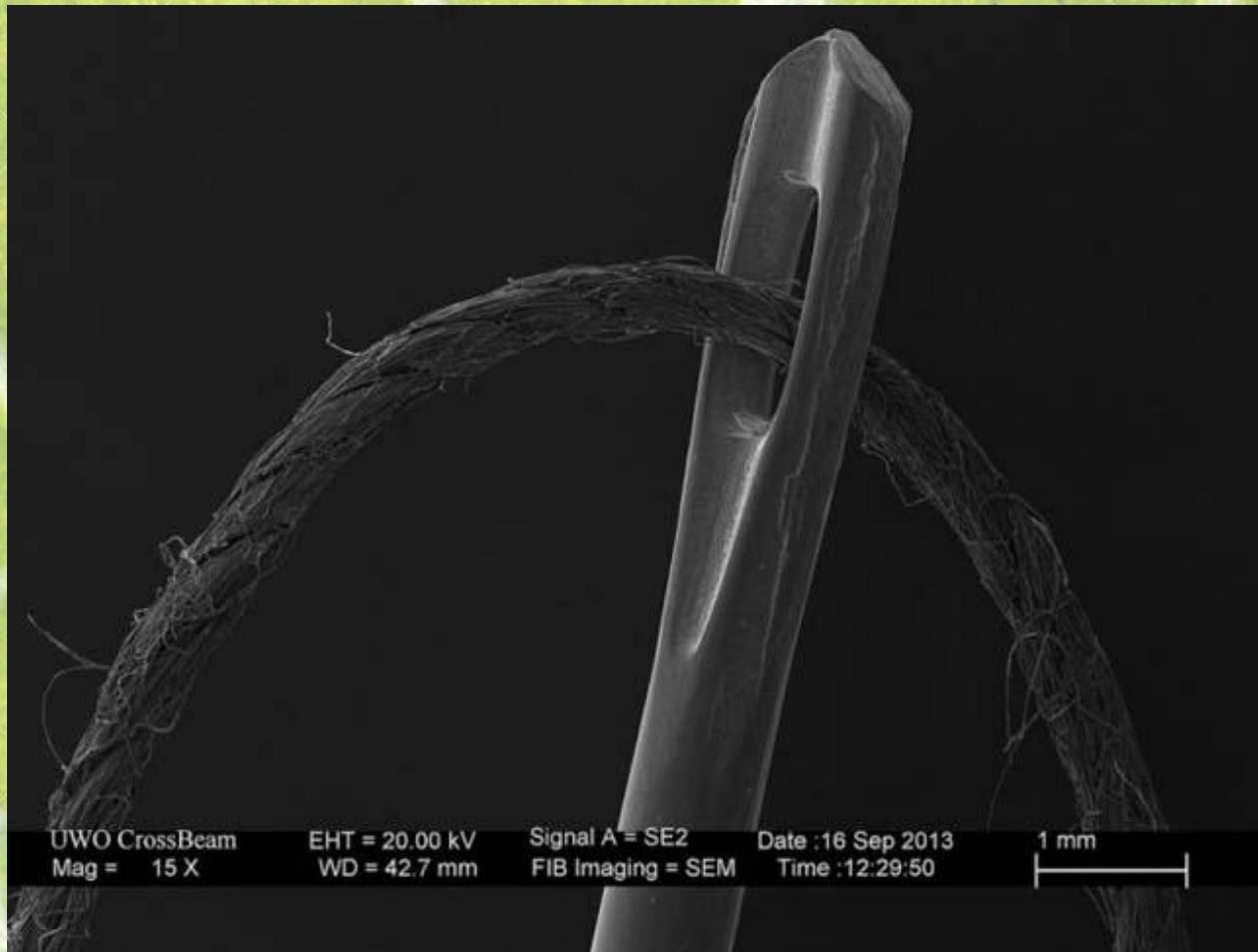
Fa



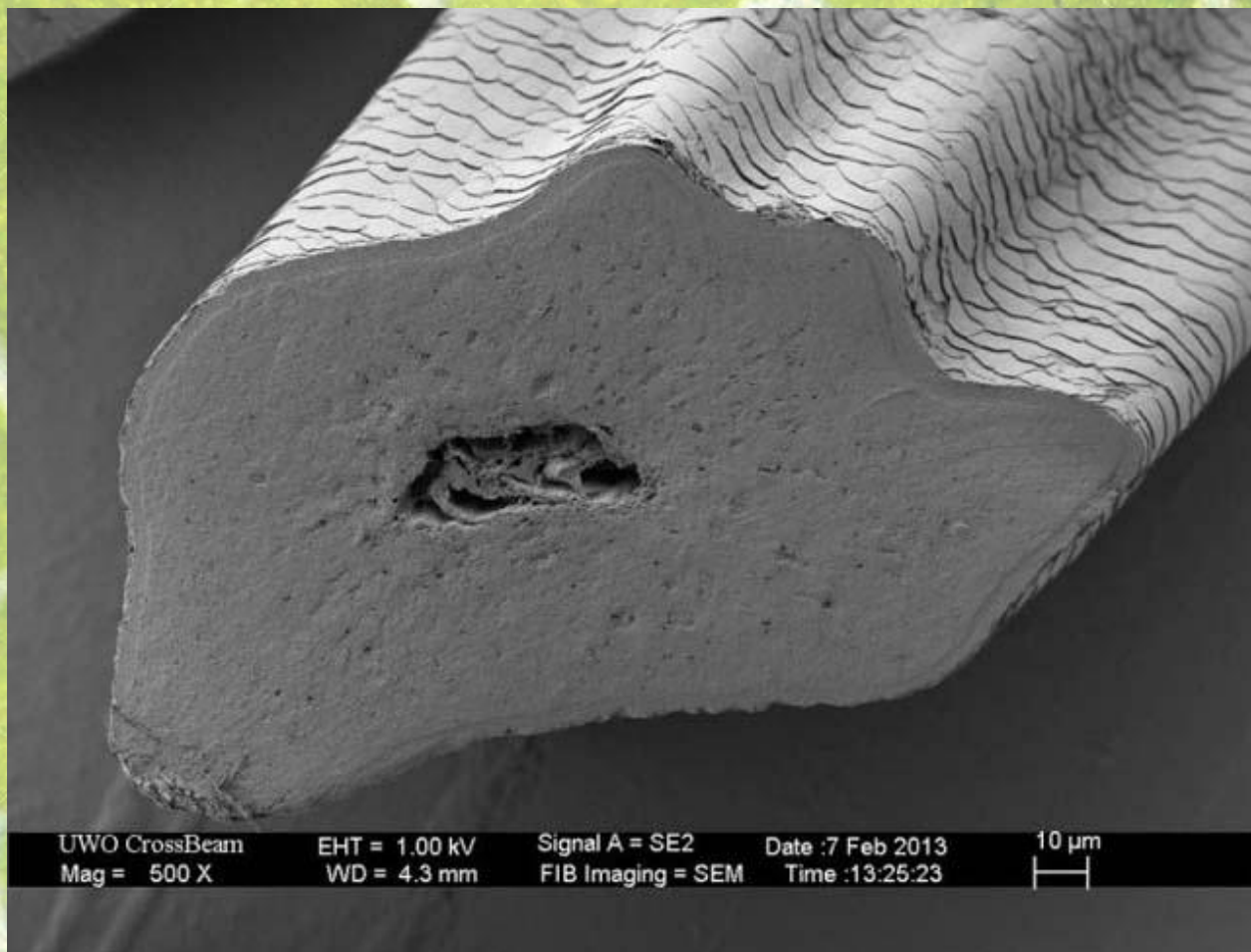
Nyomtatott papír



Tű és cérna



Bajusz szőrszál



- 
- A microscopic view of plant cells, showing a network of green, polygonal cells with prominent cell walls. The cells are arranged in a somewhat regular pattern, typical of a leaf epidermis or mesophyll. The overall color is a vibrant green, with some lighter areas where the cell walls are more pronounced.
- Köszönöm a figyelmet
Durkó Irén